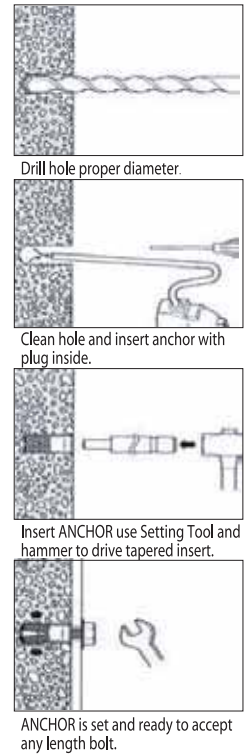
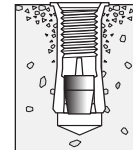


# DROP-IN ANCHOR

# GT Type



- ① FLUSH MOUNTED FIXING WITH INTERNAL MALE THREAD
- ② PRE-ASSEMBLED PLUG/TAPERED INSERT PIN
- ③ SMALLER HOLE SIZE THAN MOST OTHER FLUSH MOUNTED TYPE



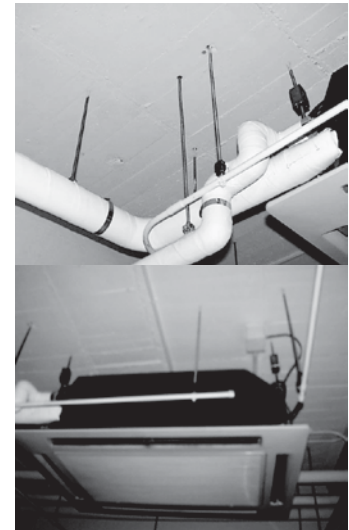
## SPECIAL FEATURES

1. This anchor will work with bolts or threaded rod in any length.
2. Drill holes same length as anchor for flush finish or drill deeper for more embedment into concrete.
3. The short body and expansion flange allow this type of anchor to be installed in shallow embedment or bottomless holes.

The anchor is set (fully expanded) when the shoulder of the setting tool touches the anchor.

## APPLICATIONS

- Hanging insulated boiler pipe.
- Pipe system
- Blower
- Heater
- Conduit
- etc.



**GT-TYPE** Whitworth Coarse Screw Threads  
Carbon Steel with Zinc Chromate Plated

Product No.	In	D	L	mm	Drill Bit		Pull Out Figures		Depth of Embedment
					In	mm	Initial	Ultimate	
GT-3030	W3/8	12	30	12	1/2	12.0	950	1,300	30

Concrete compressive strength 210 kgf/cm<sup>2</sup>

## Setting Tools

Code	Anchor size
HT-2025	CT-2025
HT-2530	CT-2530
HT-3030	GT-3030
HT-3040	CT-3040
HT-4050	CT-4050
HT-5060	CT-5060



## GT-TYPE

